

ENERGee Watch

T2. Establishing an Energy @ Climate Change TEAM

Charis Kordatos



Cyprus
Energy
Agency



ENERGee Watch has received funding from the European Union's Horizon 2020 research and innovation programme under grant agreement No 892089.



PARIS: A SOLAR CITY WITH 100% RENEWABLE ENERGIES



Paris will exit the era of fossil energies, which will be replaced by renewable energies.

Reducing our fossil energy consumption and moving to a 100% renewable energy system will drastically reduce greenhouse gas emissions while enhancing the use of closer regional resources. Paris will abandon the fossil fuels era; these will be replaced by renewable energies, especially by exploiting large deposits in Parisian territory.

However, Paris, dense urban territory, cannot achieve energy independence. Renewable resources (biomass, wind, sun) are distributed throughout France. A 100% renewable energy system must therefore be decentralised and synonymous with new cooperations between cities, urban areas, regions and their stakeholders, in order to optimise the use of these resources, and reinforce the rationale of solidarity.

By developing this new 100% renewable energy model on its territory, the City of Paris defends the right to clean energy for all Parisians, with the object of ensuring universal access to efficient and sustainable energy services.

Key actions:

- **20% of Parisian roofs equipped with solar panels in 2050**
- **Citizen involvement in energy issues** (individual and collective self-consumption, production cooperatives)
- **New forms of territorial partnerships to reach 100% renewable energy**
- **Intelligent energy networks and 100% renewable energy**



TARGETS



50%
less energy consumption
by 2050



100%
renewable and recovered
energies by 2050



20%
energy consumption
from local renewable energies
by 2050

VISION

The vision serves as the unifying component that all stakeholders can refer to, meaning everyone from leading politicians to citizens and interest groups. This vision should be developed along with the local communities through citizen participation and discussion groups (Hernandez et al., 2018).

SECAP

Completing and submitting the SECAP to CoM -> Approval with few comments -> all perfect



Setting targets

Once the vision is well established, it is necessary to translate it into more specific targets, for the different sectors in which the local authority intends to take action. Such targets should follow the principles of the SMART acronym:

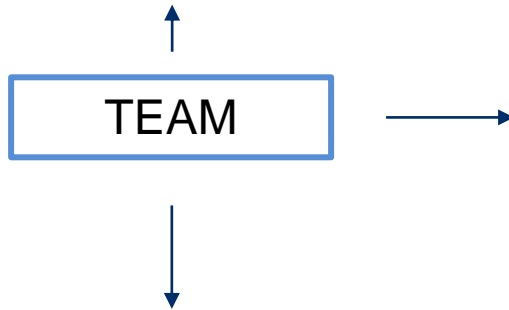
1. **S**pecific
2. **M**easurable
3. **A**chievable (feasible, actionable)
4. **R**ealistic
5. **T**ime-Bound



Establishing Energy & Climate Change Team (E&CC)



Implementing a sustainable energy and climate action plan is a challenging and time-demanding process that has to be systematically planned and continuously managed.



It requires collaboration and coordination between various departments in the administration of the local authority

In addition, one of the challenges for success is that the SECAP process should not be conceived by the different departments of the local administration as an external issue, but that it has to be integrated in their everyday processes, coordinated with plans and programmes in force

Establishing Energy & Climate Change Team (E&CC)



Before initiating
procedures for
establishing the E&CC
team



- Energy & Environmental teams already established
- Teams responsible for managing ISOs (e.g. 14001, 50001)
- DRR teams
-

Adjusting the E&CC team



A climate policy steering committee, composed by politicians and senior managers

One or several working group(s), composed by the energy planning manager, key persons from various departments of the local authority, public agencies

One or several working group(s), composed by the energy (or climate change) planning manager, key persons from various departments of the local authority, public agencies

← 'Covenant coordinator' should be appointed [important] →

provide strategic direction and the necessary political support to the process and to mainstream Climate Change policy across different departments

coordinate the activities around specific issues, possibly with contributions from non-municipal key actors directly involved in SECAP actions

help to understand city's vulnerabilities to Climate Change from multiple sectoral perspectives – focusing on real city needs and available data

Adjusting the E&CC team



External Support

- Depending on their size and human resources availability, local authorities may benefit from the assistance of Covenant Coordinators or Energy Agencies

Covenant Coordinators

Provinces, regions, national public bodies, metropolitan areas, groupings of local authorities which officially commit to provide strategic guidance, financial and technical support to Covenant signatories

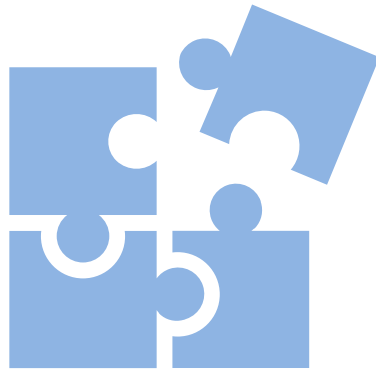
Supporters

Local and Regional Energy Agencies (LAREAs) have been active in local energy policy for decades and their knowledge and expertise could be very useful for the Covenant signatories, especially those lacking the technical capacities

- Promoting accession to the Covenant of Mayors among local authorities in their territory and providing support
- Providing financial support and opportunities to the local authorities for the development and implementation of their SECAP
- Assisting in the organisation of local energy days and dissemination tools
- Reporting regularly to the Commission on the results obtained
- Prepare an energy plan, or to update existing ones in the geographical area covered by the Agency
- Collection of energy data, the establishment of an energy balance, as well as the development of short-, medium- and long-term energy policies and plans
- Collaboration between local authorities and regional offices

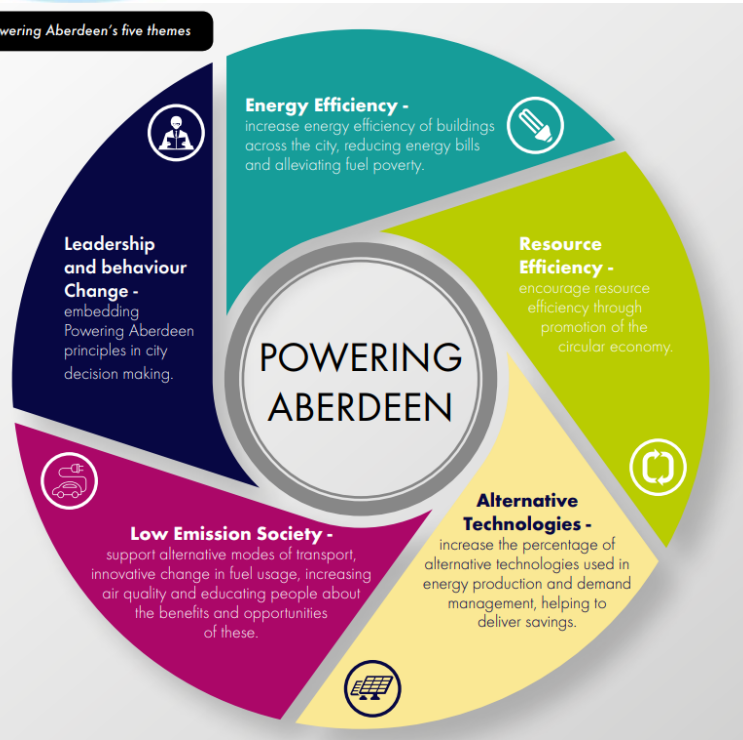
Exercise: Developing your own dream TEAM

5 min

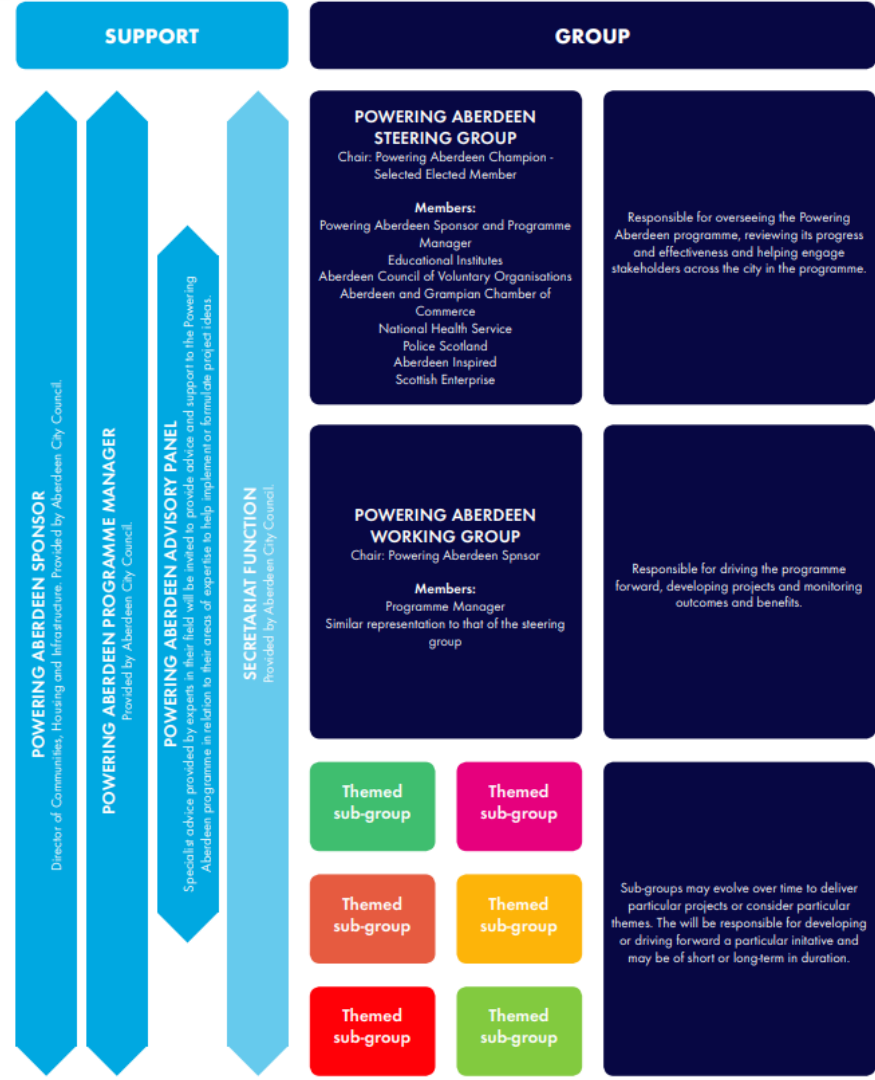


Structure of the City of Aberdeen

Figure 5 – Powering Aberdeen's five themes



Source: "Powering Aberdeen: Aberdeen's Sustainable Energy Action Plan"



Structure of the Lakatamia municipality



Structure of the Lakatamia municipality



Energy & Climate Plan	Position in the LA	Duties	Advisory Committee
Head of Charge	Mayor/ City Manager	Supervision and Decision Making	
Coordinator	Officer	Coordination, implementation, monitoring and communication	
Member 1	Officer	Support	
Member 2	Environment, CC Officer	Support in climate change issues	
Member 3	Technician	Technical Support	
Member 4	Municipal Councillor	Representation of Municipal Council. Participation in meetings.	
Member 5	Citizens	Citizens' Representative. Participation in meetings	

Structure of the Lakatamia municipality

Advisory group



- Create local Advisory group/s with key-stakeholders and relevant experts

Organization	Role
Environment Commissioner	Support for the implementation of environmental initiatives.
Strovolos Municipality	Neighboring municipality with common challenges and opportunities for joint actions.
Nicosia Municipality	Neighboring municipality with common challenges and opportunities for joint actions.
Cyprus Energy Agency	CoM Support Structure
Scientific and Technical Chamber (ETEK)	Technical support for Urban Planning - Spatial Planning
Water Development Department	Competent body for the National Flood Risk Management Plan and the implementation of the Water Framework Directive.
Department of Public Works	Competent body for public transport.
Department of Environment	Competent body for the National Strategy for Climate Change Adaptation and the Climate Change Adaptation Action Plan
Organized Citizen Groups	Citizens opinion

Duties and Qualifications



Coordinator

- Executes the decisions of the Mayor and / or the City Manager
- Coordinates the work of the Energy & Climate Change team (E&CC)
- Assigns individual tasks to team members
- Collects individual information from the team
- Communicates with stakeholders and energy consultants/advisors (e.g., Energy Agency)
- Organizes and participates in team meetings
- Informs the Mayor / Municipal Chief Secretary (progress, difficulties)
- He is responsible for the communication between the Municipality and Covenant of Mayors
- Monitoring SECAP progress and projects/initiatives related with SECAPs
- Identifying any necessary training for empowering staff skills

Qualifications required:

1. Senior officer
2. Coordination skills
3. Active
4. Consistent

Duties and Qualifications



Energy, Environment, Climate Change Officer

- Performs the tasks assigned to him by the Mayor / City Manager and Coordinator
- Supports the work of the E&CC team by providing specialized knowledge on energy, environmental and CC issues
- Undertakes tasks related to background and abilities
- Participates in the meetings of the team
- Supports Coordinator to reach relevant stakeholders
- Participation in the preparation of reports, tender forms, etc.



Qualifications required:

1. Knowledge/experience related to environmental and energy issues
2. Active
3. Supportive

Duties and Qualifications



Technician

- Performs the tasks assigned by the Mayor / City Manager and Coordinator
- Supports the work of the team by providing knowledge on technical issues
- Informs the E&CC team about the current state of technical projects in the Municipality
- Identifies weaknesses and possibilities for technical solutions
Collects technical information concerning the Municipality
Participates in the meetings of the team
- Communicates with energy consultants where required



Qualifications required:

1. Technical Knowledge
2. Active
3. Supportive

Stakeholder mapping

Why is important?

- Participatory policy-making is more transparent and democratic
- A decision taken together with many stakeholders and citizens is based on more extensive knowledge
- Broad consensus improves the quality, acceptance, effectiveness and legitimacy of the plan
- Sense of participation in planning ensures the long-term acceptance, viability and support of strategies and measures
- SECAPs may sometimes get stronger support from external stakeholders than from the internal management or staff of the local authority



Stakeholder mapping



With SM you can see where stakeholders stand when evaluated against the same key criteria and compared to each other. At the same time, it helps you visualise the complex interplay of relationships which can derail your project.

Source: [De Vicente Lopez, Javier and Matti, Cristian \(2016\). Visual toolbox for system innovation. A resource book for practitioners to map, analyse and facilitate sustainability transitions. Transitions Hub Series. Climate-KIC, Brussels 2016](#)



Stakeholder mapping



INFLUENCE

Ability of the actors to influence, modify or drive your initiative or other stakeholders. How much can they influence other stakeholders or even the process itself? Who do they influence?.....

RELEVANCE

Combination of Influence and Necessity results in the Relevance of the stakeholder. It can give you a first approximation of those stakeholders to engage with.

EXPERTISE

Does the stakeholder have information, counsel, or expertise on the issue that could be helpful to the process? What resources are they providing to the current System? Money, knowledge, materials, products, services...?

NECESSITY OR URGENCY

Is this actor someone who could derail the process if they were not included in the engagement - regardless of their stance or interest in the project?

INTEREST

“How willing is the stakeholder to engage? Do stakeholders have a large or small interest in the project? Is their position one of indifference to your project? What is their level of engagement, involvement, closeness or even commitment?

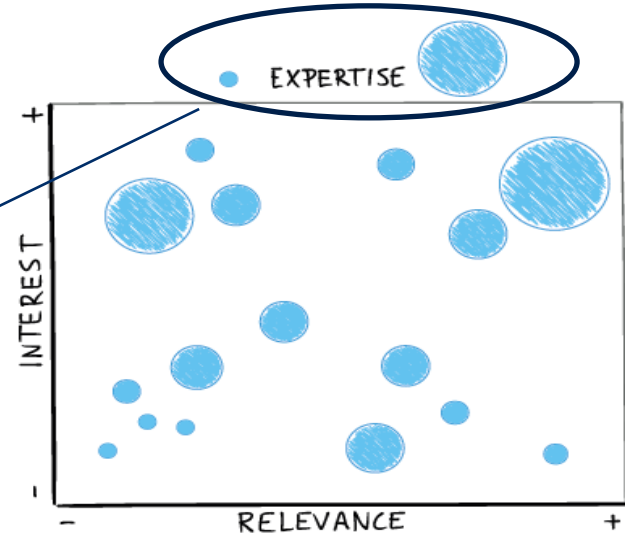
Stakeholder mapping



ENERGee Watch

This is a threefold criteria map:
Draw the **Relevance/Expertise/Interest** Matrix in which the vertical axis accounts for the interest and the horizontal for the relevance.

The more expertise an actor has, the bigger the circle size



Source: [De Vicente Lopez, Javier and Matti, Cristian \(2016\). Visual toolbox for system innovation. A resource book for practitioners to map, analyse and facilitate sustainability transitions. Transitions Hub Series. Climate-KIC, Brussels 2016](#)

Stakeholder mapping

With actors showing little or no interest for the project but that are highly relevant for it, you should meet their needs, but no further engagement is necessary since they are not interested.

[meet their needs]

[show consideration]

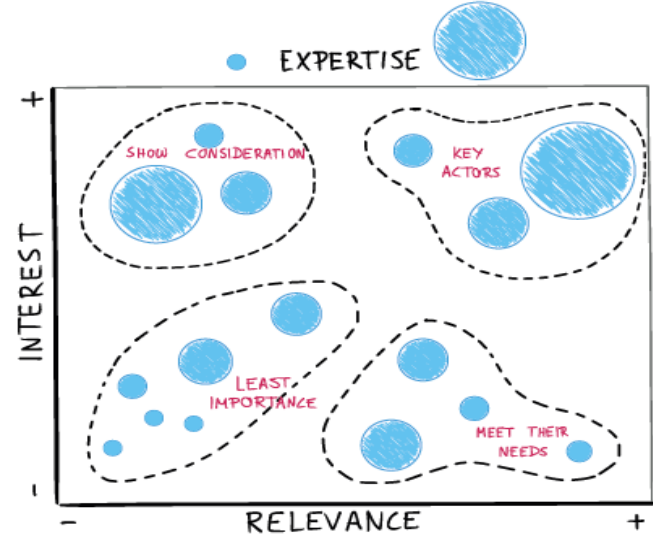
If an actor shows a high interest for the project, despite his low relevance, you should think about engaging them.

[key actors]

Engagement becomes mandatory when they are also relevant.

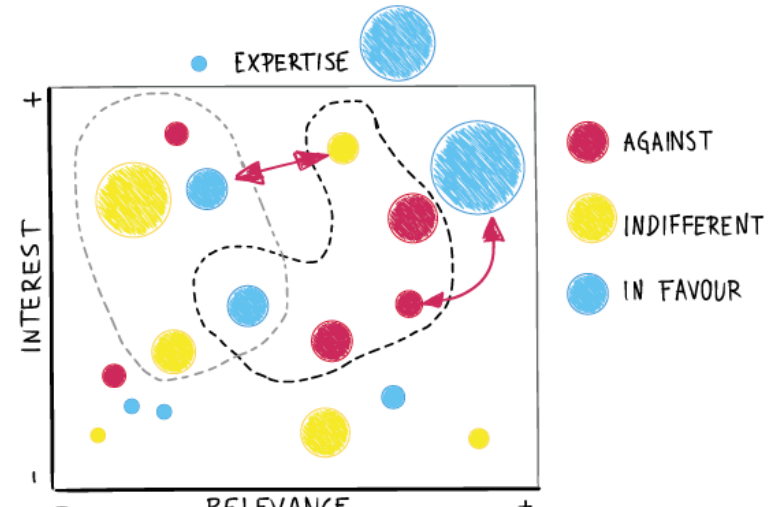
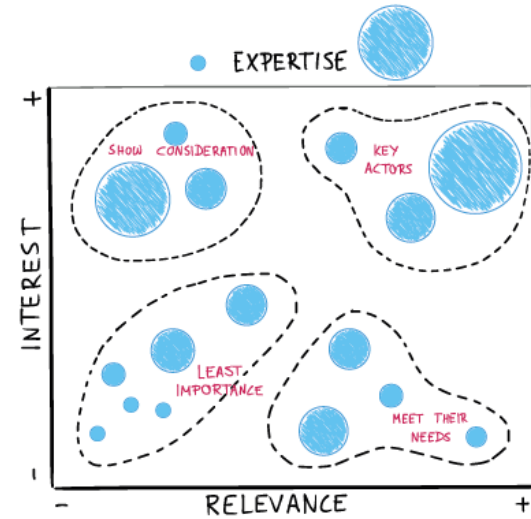


ENERGee Watch



Stakeholder mapping

Generally speaking, actors with high expertise should be engaged in the process as long as their relevance is medium to high or their interest is high, despite having low relevance. In other cases, informing them or communicating with them is enough.



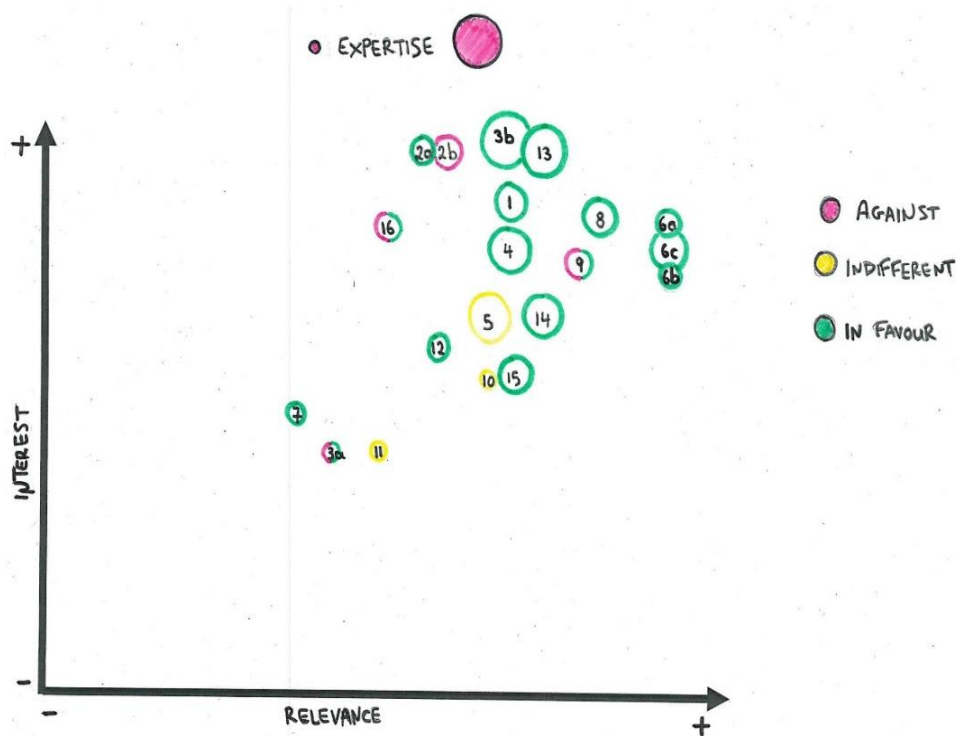
Stakeholders identification (example of Cyprus)



1. VET providers (KES college, Intercollege, UCLAN)
2. Business/Enterprises
 - a) Supported technologies
 - b) Competing technologies
3. Trade Unions
 - a) POAS (Pancyprian Traders Union)
 - b) PASEKSEE (Association of Energy Efficiency Businesses)
4. Accreditation Bodies (CYS)
5. Universities (UCY, CUT, Frederick, UNIC, EUCY, Neapolis)
6. Policy makers responsible for education, accreditation and employment
 - a) Ministry of Education
 - b) Ministry of Labour
 - c) Ministry of Energy, Commerce and Industry
7. NGO's
8. Chambers of crafts (CCCI – Cyprus Chamber of Commerce and Industry)
9. Employer's organizations (OEB – Employers and Industrialists Federation)
10. Employee's organizations (PEO, SEK etc.)
11. Public sector / Municipalities
12. Business support organizations
13. Productivity Centres (KEPA)
14. Scientific and Technical Chambers (ETEK)
15. Engineers (ACEEME – Mechanical Engineers, SPOLMIK – Civil Engineers, Cyprus Architects Association)
16. Construction material suppliers



ENERGee Watch



The stakeholders were then mapped in terms of **interest** and **relevance**.

The bigger the circle, the more expertise a stakeholder has.

Moreover, **the colour of the circle indicates the stance of the stakeholder**. Those with both red and green colour are ones with members with opposing views (e.g. the Employers and Industrialists Federation has member-companies that work with energy efficiency technologies and others with conventional technologies). Depending on the persons involved from each stakeholder, the view of the organisation might shift.

Therefore, it is important to identify and approach the right representative which will be in favour of the objectives of the project.



ENERGee Watch

Tactic	Stakeholder
Engage (high priority)	1, 3b, 4, 5, 6a&c, 13, 14
Communicate (medium priority)	2, 6b, 8, 9, 15, 16
Inform (low priority)	3a, 7, 10, 11, 12

- For each stakeholder, a different tactic of engagement might be needed.
- The three categories of tactics used to group stakeholders are Engage, Communicate, and Inform.
- All identified stakeholders are grouped in the table based on the level of engagement which we will seek for each one of them.

Superblock Barcelona

- ▶ The city of Barcelona has introduced 'superblocks' or 'filling the streets with life' programme to free up space for green areas and recreation by reducing the amount of traffic and vehicles on certain streets.
- ▶ The superblocks programme is multi-sectoral as it is linked to the city's climate change commitments, as well as to its climate, urban mobility, green infrastructure, and biodiversity plans.
- ▶ Barcelona is able to address the urban heat island effect and create habitats that will encourage biodiversity. Further benefits include reducing storm water runoff and flooding. All in all, the result is a more liveable and resilient city.



ENERGee Watch



Superblock Barcelona



ENERGee Watch

- Vehicles are allowed primarily for accessing residences, public transport, disabled people, emergency vehicles, and bicycles.
- The limit for the vehicles, bicycles, hand scooters is of 10km/hr within the superblock.



Superblock Barcelona

- ▶ Strong participatory process – a design for all:
 - Events on the street
 - Poll
 - Presentation session of the Superilla Barcelona strategy
 - Session of presentation of the new Model of Public Space and work of diagnosis by neighbourhoods
 - Proposal sessions in relation to projects
 - Return sessions
 - Presentation to the Neighborhood Councils
 - Follow-up sessions of the Monitoring Committees



ENERGee Watch



Source: <https://ajuntament.barcelona.cat>

More: <https://www.decidim.barcelona/processes>

Superblock Barcelona



ENERGee Watch



Build support from stakeholders and citizen participation: if they support the SECAP, nothing should stop it!



Yeitonia +

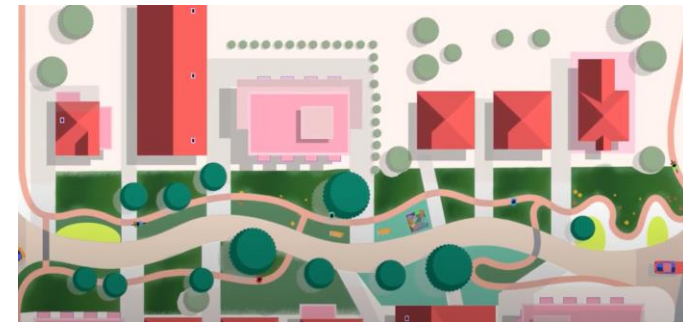
- ▶ "Yeitonia +" is an initiative of the Cyprus Energy Agency in collaboration with the Cyprus University of Technology

Aim: to change the way we live in our neighbourhoods

- ▶ "Yeitonia +" is characterized by an increased percentage of pedestrian zones and green areas, encouraging and facilitating the movement of pedestrians and bicycles, providing safe access to all citizens with no exception, and restricting the use of private vehicles



ENERGee Watch



Thank you!

Charis Kordatos

charis.kordatos@cea.org.cy



Cyprus
Energy
Agency



ENERGee Watch has received funding from the European Union's Horizon 2020 research and innovation programme under grant agreement No 892089.